

EVANGELICAL INSTITUTE | ACADEMIC CATALOG

2024 - 2025



EVANGELICAL
INSTITUTE

Table of Contents

History.....4

Distinctives.....6

Admissions & Requirements.....7

Tuition..... 11

Doctrinal Statement..... 12

Campus Life..... 15

Degree Programs..... 16

Course Schedule..... 21

Course Descriptions..... 24

Academic Policy..... 31

Faculty..... 36



EVANGELICAL INSTITUTE | EST. 1972
BIBLE COLLEGE

PURPOSE & MISSION

The Evangelical Institute exists to train young believers to develop a relationship with Jesus Christ that expresses itself in godly character and missional living.

IT'S THIS SIMPLE:

Our goal is that you would walk with Jesus.



Apply at www.eibibleschool.org



In 1967, Joseph S. Carroll arrived in Greenville, South Carolina, with a vision born from years of teaching and counseling missionaries worldwide. He saw a need for a place where faith could be deeply lived out, not just learned—a center that emphasized **surrender to Christ, prayer, and authentic worship**. It was a bold step of faith, trusting that if God willed this ministry, He would provide every resource.

By 1972, the Evangelical Institute welcomed its first class of 13 students. Word spread quickly, and soon young people from across the globe came, eager to experience a discipleship school rooted in practical,

Spirit-filled living. EI graduates now serve in missions, lead churches, and make an impact in their communities, carrying the heartbeat of EI across the world.

In a world of shifting cultures and innovative ways to connect, our mission stands firm: to foster a deep love for and walk with Jesus Christ, preparing mission focused Christians to carry the Gospel to every corner of the earth. At EI we summarize this goal in four words: **Our heartbeat is discipleship.**

WE PRIORITIZE SPIRITUAL GROWTH.

1

Distinctives

We prioritize spiritual growth.

Our program focuses on teaching students to walk in daily fellowship with the Lord. We do not want to simply impart knowledge but desire that our students grow spiritually. Although we maintain a devotional emphasis, our courses are intellectually challenging and academically rigorous.

We emphasize practical Christian living.

We offer more than a degree program. Students follow a structured schedule, serve on campus, and participate in extracurricular activities giving them the opportunity to apply what they are learning in the classroom to their daily lives.

We offer a 3-year bachelor degree and a pathway to graduate studies.

Motivated students can earn the bachelor degree in as little as three years by earning their general education credits during the summer. Our graduates have been accepted at many seminaries and have excelled in their graduate studies.

We foster a sense of community.

Staff and students engage with one another, not just in the classroom, but throughout the day. This close fellowship provides opportunities for mutual edification and leads to lifelong friendships.

We value the local church and its mission.

Students are required to commit to a local church. We desire that our students value the local church and understand their role in God's mission to the nations.

We are affordable.

We are committed to keeping costs low so that students can be trained without incurring debt. Our low costs are made possible by God's faithful provision through generous donors.

We are non-denominational.

We are a Christian school which is evangelical, non-denominational and which focuses on essential biblical truths rather than on any particular theological scheme or doctrinal peculiarities.

2025/2026

Admissions & Requirements

APPLICATION DEADLINES:

Aug. 1

FALL SEMESTER

Dec. 15

SPRING SEMESTER

If you believe the Lord desires you to attend EI, the process of application and acceptance involves two simple steps:

1. **Fill out an application form:** Begin the application by filling out the form found on our website.
2. **Provide two references:** You will need two references, one from your pastor, and one from someone who knows you well (not a family member). Please be ready to provide their email addresses in the application.

Once you have completed these steps, we will respond to you in a timely manner. If we feel it is necessary, we might reach out for a personal interview.

Stephen Johnson |
admissions@eibibleschool.org

Apply at www.eibibleschool.org

Want to schedule a visit?

Call us at **864.678.4900** | Email us at admissions@eibibleschool.org

We would love to provide **free housing** and **meals** as a thank you for visiting us!

2025/2026

Admissions & Requirements

General Requirements:

Age:

Each applicant must be 18 years of age or older at the time of registration. However, applicants may be 17 years old if they will be turning 18 by December 31 of that year (this is only applicable for those applying for the fall semester).

Education:

Each applicant must be a high school graduate or have obtained a GED.

Language:

Each applicant must have a working knowledge of the English language.

Theology:

Each applicant must be in agreement with our Doctrinal Statement.

The Right Spirit:

Do You Have A Teachable Spirit?

In the early chapters of Proverbs, Solomon presents a teachable spirit as the essence of wisdom. A wise man receives instruction. The Lord said, "The one who has ears to hear, let him hear." Crowds of people listened to the teaching of the Lord. Sadly, most went away untouched. They came to consider not to respond. Seeking hearts are teachable hearts that listen closely to the Lord and respond to Him with obedient faith.

Do You Have A Team-Oriented Spirit?

Early on in his christian experience, John Wesley was greatly impacted by a man who told him, "Sir, you wish to serve God and go to heaven. Remember you cannot serve Him alone. You must therefore find companions or make them. The Bible knows nothing of solitary religion." God does not call us to live the christian life alone. When we become a child of God, we also become part of Christ's body. That body, which is to work and function as a group, requires both participation and adaptability. God loves unity and speaks most clearly to His people when this is true of a group. Each student must be ready to set aside personal considerations for the benefit of others.

2025/2026

Admissions & Requirements

The Right Spirit cont:

Do You Have A Faithful Spirit?

Paul told Timothy to entrust the truth to faithful men who would be able to teach others. Interestingly, Paul did not say gifted men, intellectual men, or personable men. God desired faithful men.

Testing faithfulness in young men and women is not simple. Interestingly, one of the few indications of faithfulness given in Scripture has to do with money. "He who is faithful in small things is also faithful in much." The small thing referred to here is the use of money. If that is not handled righteously, the Lord asks how God could entrust into a man's hands true (spiritual) riches. How we handle the financial responsibilities of life gives an indication of how we will handle spiritual responsibilities.

We have a no-debt policy. We require, therefore, that any accumulated debt be adequately handled before taking on the further obligation of tuition for school. Faithfulness also means meeting obligations. Students must be able to demonstrate that they will be able to meet all biblical family and personal obligations while they are attending EI.

Do You Have A Controlled Spirit?

We must make it clear that our ministry is discipleship-training, not in-depth counseling or rehabilitation. We recognize the need for both of these ministries, and have found through experience that our program is not a substitute for helping those whose needs require these specialized ministries. Applicants, therefore, must be free of addictive behavior, such as drugs, alcohol, tobacco, pornography, etc. Past difficulty in these areas does not disqualify anyone from attending, but there must be a definite, demonstrated deliverance before undertaking the pressures of training. Our course of study is intense, and students must be physically and emotionally capable of meeting the demands of the program.

WE EMPHASIZE PRACTICAL CHRISTIAN LIVING.

2

2025/2026

Tuition & Fees

EI is committed to offering a low-cost education to ensure our students do not incur significant debt. We deliberately keep tuition low with full transparency about all of our fees. Our goal is to support our students in their educational pursuits without adding a financial burden.

COST PER SEMESTER:

There are additional housing increases for married couples and families who want housing. These rates can be seen at www.eibibleschool.org/tuition

Off Campus Student:

Tuition - \$2,500
 Meals - \$0
 Books and Supplies - \$150*

\$2,650

On Campus Student:

Tuition - \$2,500
 Housing - \$500
 Meals - \$0
 Books and Supplies - \$150*

\$3,150

ADDITIONAL FEES:

Registration Fee - \$250.00
 Room Deposit - \$100.00

*estimate

FINANCIAL AID & SCHOLARSHIPS:

- At EI, we are committed to providing quality biblical education at an affordable rate, ensuring that every student benefits from our built-in scholarship program. Therefore, we do not offer additional in-house scholarships as all students already receive the financial support from the college.

- As an unaccredited institution, EI is unable to offer any government financial aid.

Doctrinal *Statement*

God

We believe in one God, eternally existing in three Persons: Father, Son, and Holy Spirit, equal in essence, power and glory. God is infinite in His knowledge and power, perfect in His character and ways, and is the Creator of and sovereign Lord over all things.

Scripture

We believe that the Scriptures of the Old and New Testaments are verbally inspired by God and without error in the original writings, and that they are the supreme and final authority for faith and life.

Man

We believe that Adam and Eve were created in the image and likeness of God. However, they sinned, and thereby incurred not only physical death, but also spiritual death, which is separation from God. As a consequence, this spiritual death has been transmitted to the entire human race so that all human beings are born with a sinful nature, become sinners in thought, word, and deed, and are therefore rightly deserving of eternal punishment.

Jesus Christ

We believe that Jesus Christ, the eternal Son of God, was conceived by the Holy Spirit and born of the Virgin Mary, and is therefore fully God and fully man.

We believe that, out of His great love for guilty and lost human beings, God sent His Son, the Lord Jesus Christ, to die for the sins of mankind as a representative and substitutionary sacrifice. Jesus was buried, and He rose from the dead three days later.

We believe that through His death and resurrection, Jesus bore the penalty of sin, appeased God's wrath, broke the power of sin and death, defeated Satan and secured eternal life for His people.

We believe in the bodily resurrection of our Lord Jesus Christ, His ascension into heaven, His enthronement as Lord of heaven and earth, and His present ministry there as High Priest and Advocate for all who believe in Him as Savior and Lord.

Salvation

We believe that all who repent of their sin and trust in the Lord Jesus Christ are justified by grace, apart from any of their works. Furthermore, all who receive the Lord Jesus by faith are born again of the Holy Spirit, and thereby become children of God.

Satan

We believe in the reality and personality of Satan and evil spirits who wage war against all people, especially the people of God, by spiritual and physical means in a constant effort to prevent or hinder the establishment of Christ's kingdom in the hearts of all people.

Second Coming

We believe that our Lord and Savior Jesus Christ will personally return and set up His earthly Kingdom, through which He will rule the world in righteousness and finally bring peace to the world.

We believe in the bodily resurrection of all people, eternal blessedness for the saved in heaven, and eternal misery and damnation in hell for the lost.

Church

We believe that, since Pentecost, the Lord Jesus Christ has been building His Church – His spiritual body – by joining to it all who have been born again of the Holy Spirit. He has commissioned and enabled the Church to make disciples in all parts of the earth and teach them His word.



WE OFFER A 3-YEAR BACHELOR DEGREE AND A
PATHWAY TO GRADUATE STUDIES.

A young man with dark hair, wearing a white t-shirt, is smiling and reading an open book. He is standing in a library, with a tall bookshelf filled with books visible to his right. A large, semi-transparent yellow shield is overlaid on the image, centered over the man's chest. Inside the shield is a large, dark green number '3'. The overall lighting is soft and focused on the man and his book.

3

Campus *Life*

1. BIBLICAL

Because spiritual growth is rooted in the principles of the Word of God, daily Bible study is at the heart of our training program. Having crafted our courses over 50 years, we focus on the essential truths needed for personal growth and ministry. In just 21 months, a student will complete about 60 semester hours of impactful instruction. For further information, see course descriptions under each of our diploma programs.

2. DEVOTIONAL

Prayer is a vital ingredient to spiritual health; therefore, the development of a vital prayer life demands much more than instruction. Prayer is a skill that must be learned by experience and practice. At EI, we have structured the schedule to provide multiple opportunities to develop a devotional life through prayer.

Time is allotted daily to allow students to be alone with the Lord in prayer and the Word. A combination of daily discipline and guidance from staff enables each student to discover and develop a quiet time that matches the individual's needs and temperamental bents.

Prayer times are frequent and varied. Through prayer partners, small group prayer, days of prayer, corporate worship and prayer with the local church, we seek to give the Lord an opportunity to teach about prayer in all its multiple expressions.

3. VOLLEYBALL

In addition to the core classes above, every student is required to take part in a daily PE class. Most of the time this is the EI tradition of volleyball. The games are competitive and fun, and love it or hate it, this is a great opportunity for the Holy Spirit to do a sanctifying work as players learn teamwork, dealing with adversity, and other practical lessons.

4. SERVICE

Learning to serve in harmony with others is a vital part of character growth. In addition to personal growth, students reap other benefits of serving together. Tuition is kept to a minimum by student participation in daily maintenance. All students serve four hours a week in maintaining the grounds and buildings. Everyone is involved. The mature Christian is a servant at heart.

5. COMMUNITY

At EI, we do more than just attend classes, play volleyball, and complete service hours—we live life together. Our goal is to create a community of like-minded Christian students who embody our core values. We eat together, work together, learn together, and have fun together, building a strong, supportive community every step of the way.

Bachelors *of*

Biblical Exposition & Church Ministry

The Bachelor of Biblical Exposition and Church Ministry is a newly revised program intended to prepare men and women to faithfully communicate God's Word and serve in local churches. This program is designed to build on the two-year Associate of Biblical Studies. The program includes the same curriculum as the associate degree program as well as further study in four areas: Biblical Exegesis & Exposition, History of Theology, Practical Ministry, and Spiritual Formation.

120

Credit Hours

30

Concentration Credits

24

General Ed Credit

3+

Avg. Years To Complete

PROGRAM REQUIREMENTS

In order to graduate with a Bachelor of Biblical Exposition and Church Ministry, a student must meet the following requirements:

- A student must have previously completed a High School degree or its equivalent.
- A student must complete all three years of coursework from the Evangelical Institute.
- A student must complete and transfer a minimum of 24 semester hours of General Education to the Evangelical Institute within one year of completing the program.
- A student must have earned a total of 120 semester hours of coursework.
- A student must maintain a cumulative GPA of 2.50 or above.
- A student may not have a failing grade in any course.
- A student must have completed his/her memorization of Romans.

Bachelors *of*

Biblical Studies

The Bachelor of Biblical Studies is designed for students who have already completed some college work. This program is identical to the Associate of Biblical Studies, but it requires that students transfer into our program a minimum of 60 semester hours. These credits must be transferred within one year of completing our program. Our two-year program is designed to equip students with biblical truths and patterns of living that are essential to maintaining a vital relationship with Jesus Christ while proclaiming the message of the gospel anywhere in the world. The core curriculum includes extensive surveys of both the Old Testament and the New Testament as well as foundational courses on prayer, spiritual conflict, and the book of Romans. The program also includes practical ministry courses such as Bible study methods, evangelism, missions, and counseling.

120

Credit Hours

36

Concentration Credits

24

General Ed Credit

2+

Avg. Years To Complete

PROGRAM REQUIREMENTS

In order to graduate with a Bachelor of Biblical Studies, students must meet the following requirements:

- A student must have previously completed a High School degree or its equivalent.
- A student must complete a minimum of 60 semester hours of coursework from the Evangelical Institute.
- A student must complete and transfer a minimum of 36 semester hours of General Education to the Evangelical Institute within one year of completing the Associate degree.
- A student must complete and transfer a minimum of 24 semester hours of electives to the Evangelical Institute within one year of completing the Associate degree.
- A student must maintain a cumulative GPA of 2.50 or above.
- A student may not have a failing grade in any course.
- A student must have completed his/her memorization of Romans.

Associate *of*

Biblical Studies

The Associate of Biblical Studies is our core discipleship program. This two year course of study is designed to equip students to think biblically and live faithfully. The core curriculum includes extensive surveys of both the Old Testament and the New Testament as well as foundational courses on prayer, spiritual conflict, and the book of Romans. The program also includes practical ministry courses such as Bible study methods, evangelism, missions, and counseling.

60

Credit Hours

2+

Avg. Years To Complete

PROGRAM REQUIREMENTS

In order to graduate with a Associate of Biblical Studies, students must meet the following requirements:

- A student must have previously completed a High School degree or its equivalent.
- A student must maintain a cumulative GPA of 2.50 or above.
- A student must have completed a minimum of 60 credit hours.
- A student may not have a failing grade in any course.
- A student must have completed his/her Romans memorization.



Diploma *of*

Biblical Discipleship

The Diploma of Biblical Discipleship is a one year gap program designed to equip students with biblical truths and patterns of living that are essential to maintaining a vital relationship with Jesus Christ. The core curriculum includes an extensive survey of the Old Testament as well as foundational courses on prayer, and the book of Romans. The program also includes practical ministry courses such as Bible study methods and evangelism.

30

Credit Hours

1

Avg. Years To Complete

PROGRAM REQUIREMENTS

In order to graduate with a Diploma of Biblical Discipleship, students must meet the following requirements:

- A student must have previously completed a High School degree or its equivalent.
- A student must maintain a cumulative GPA of 2.50 or above.
- A student must have completed a minimum of 30 credit hours.
- A student may not have a failing grade in any course.
- A student must have completed his/her Romans memorization.



WE FOSTER A SENSE OF COMMUNITY.

4



Course Schedule

First Year

Core Classes

- CL 112: Fundamentals of Discipleship -1 Hour
- CL 111: Principles of Prayer -2 Hours
- NT 116: Romans -5 Hours

Survey Classes

- OT 104: Old Testament Survey I -5 Hours
- OT 105: Old Testament Survey II -5 Hours

Doctrine Classes

- TH 121: Doctrine of God -3 Hours

Practical Ministry Classes

- PM 111: Evangelism & Discipleship -3 Hours
- PM 115: Apologetics - 3 Hours
- EE 101: Bible Study Methods -3 Hours
- PE 101: Physical Education

Second Year

Core Classes

- CL 201: Principles of Spiritual Conflict -3 Hours
- NT 220: Ephesians -3 Hours

Survey Classes

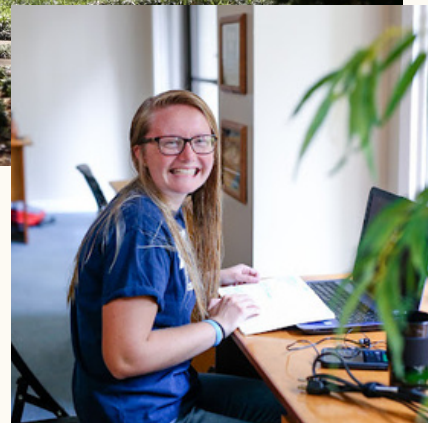
- NT 204: New Testament Survey I -5 Hours
- NT 205: New Testament Survey II -5 Hours

Doctrine Classes

- TH 221: Doctrine of Man, Christ, and Salvation -3 Hours
- TH 223: Doctrine of Scripture and the Holy Spirit -3 Hours

Practical Ministry Classes

- PM 235: Biblical Counseling -3 Hours
- PM 212: Methodology of Missions -3 Hours
- CL 211: The Practice of Prayer -1 Hour



Course *Schedule* CONT.

Third Year

Exegesis and Exposition

- EE 311: Biblical Exegesis – 1 Hour
- EE 312: Biblical Exposition – 2 Hours
- EE 331: Preaching/ Teaching Practicum – 3 Hours
- EE 334: Leading Small Groups – 3 Hours
- EE 320: Fundamentals of Biblical Hebrew and Greek – 3 Hours
- NT 329: Hebrews – 3 Hours

History and Theology

- TH 304: History of Theology (100-1500 AD) – 3 Hours
- TH 305: History of Theology (1500-Present) – 2 Hours

Practical Ministry

- PM 321: Ministry in the Local Church – 1 Hour
- PM 336: Counseling the Hard Cases – 1 Hour
- PM 323: Culture and Ethics – 3 Hours
- CL 322: Practical Christian Living – 2 Hours
- PM 324: Leadership Development – 1 Hour
- PM 312: Cross-centered Ministry – 1 Hour
- PM 313: Prayer & Ministry – 2 Hours



WE VALUE THE LOCAL CHURCH AND ITS MISSION.

5



Course *Descriptions*

Bible Courses

OT 104: Old Testament Survey I -5 Hours

This class is a survey of the Old Testament focusing on the books Genesis through 2 Samuel. Since it is a survey class, only key passages and topics will be covered. Getting to know the Lord through His Word is the vital part of this class and will be the emphasis of our study of the Word of God.

OT 105: Old Testament Survey II -5 Hours

Same as OT 101, but covering the Kings and post-exilic time period as well as the Wisdom literature.

NT 204: New Testament Survey I -5 Hours

This course provides an in-depth Bible study of the four Gospels and the book of Acts. It includes a study of the chronology of Christ's ministry as well as a thorough study of the spread of Christianity in the early first century. Historical and geographical backgrounds are considered as well as authorship, dates, purpose(s), significant persons, theology and major themes of each book.

NT 205: New Testament Survey II -5 Hours

This course surveys the letters and epistles of Paul as well as the general epistles. Historical and geographical backgrounds are considered as well as authorship, dates, purpose(s), significant persons, theology and major themes of each book.

NT 329: Hebrews – 3 Hours

This is an in-depth study of the epistle to the Hebrews. Special emphasis is placed on understanding the importance of the priesthood of Jesus Christ and on the principles for an enduring faith under trial.

NT 116: Romans -5 Hours

This course is a verse-by-verse study of the book of Romans, a book long regarded as the most comprehensive presentation of the gospel in the Bible. The overall structure, development, theology, and application of the book will be stressed.

NT 220: Ephesians -3 Hours

The purpose of this course is to thoughtfully and carefully walk through the New Testament letter of Ephesians. Special attention will be given to important themes in the book as well as their application to life in the local church.

Course *Descriptions* CONT.

Exegesis and Exposition Courses

EE 101: Bible Study Methods -3 Hours

Rules of interpretation are presented in the context of Bible study. Attention is given to proper methodologies and techniques for accurate Biblical analysis. Basic skills of biblical interpretation are developed and applied through a student commentary project.

EE 311: Biblical Exegesis – 1 Hour

This course examines the principles and practices of biblical interpretation, as well as the primary tools for biblical research. Students will be taught a logical process to study the Scriptures and develop expository sermons and Bible lessons.

EE 312: Biblical Exposition – 2 Hours

The goal of this course is to teach students how to Biblically expound a passage which will enable them to discover the intended message of a given passage of Scripture and present it in a way that people will understand and respond to. This course is meant to prepare students to teach/preach the Word of God.

EE 331: Preaching/ Teaching Practicum – 3 Hours

Students will be coached through sermon preparation and delivery. Students will take turns delivering sermons or Bible lessons in class. A critique will be conducted after each session.

EE 334: Leading Small Groups – 3 Hours

This course introduces students to the basics of Small Group Bible studies. We will go over the basic theory and discuss the "how" of small groups, but the majority of the course will be very practical. Emphasis will be placed on your preparation, readiness and ability to teach and lead these small groups to definite established goals. However, you need to be a good small group participant too, when not teaching or leading.

EE 320: Fundamentals of Biblical Hebrew and Greek – 3 Hours

This course introduces students to the alphabet and pronunciation of Biblical Hebrew as well as the alphabet, basic grammar, vocabulary, and syntax of New Testament Greek. The majority of this course is focused on Greek. Emphasis is placed on developing a foundation of the Greek language that will enable students to make better use of Greek study materials, exegetical commentaries, as well as making sense of differing English translations.

Course *Descriptions* CONT.

Theology Courses

TH 121: Doctrine of God -3 Hours

This course is a systematic introduction to the Names and Attributes of God. True worship begins with a clear understanding God's nature. The purpose of this course is to assist students in developing a more personal relationship with their Heavenly Father.

TH 221: Doctrine of Man, Christ, and Salvation -3 Hours

The purpose of this course is to more fully understand and organize the doctrines of man, Christ and salvation in order that we might better worship God, grow in holiness, and more effectively teach others.

TH 223: Doctrine of Scripture and the Holy Spirit -3 Hours

The purpose of this course is to more fully understand the doctrines of Scripture and the Spirit that we might confidently build our lives on God's Word and learn to walk in step with God's Spirit.

TH 304: History of Theology (100-1500 AD) – 3 Hours

This class explores the development of various doctrines as the Church was being established. Emphasis is put on beliefs that arose and were dealt with at various Church councils. The class also addresses how the doctrinal development of the Church relates to present day life.

TH 305: History of Theology (1500-Present) – 2 Hours

This class continues the study of theology from the Reformation to the present time. While the truth of God's Word has not changed, various oppositions and false beliefs have continued to challenge the teaching of Scripture even until now. Emphasis is given to present issues that students might face as they lead and serve in local churches.

Course *Descriptions* CONT.

Christian Living Course

CL 112: Fundamentals of Discipleship -1 Hour

This introductory course focuses on Jesus' teachings about the cost of following Him. Classes focus on how the cross affects one view of self, possessions, family and the world.

CL 111: Principles of Prayer -2 Hours

This course is designed to give students the foundational principles of an effective prayer life. Special attention is given to Jesus' teachings on prayer and includes practical applications as students are weekly required to pray alone, with a prayer partner, in small groups and corporately.

CL 201: Principles of Spiritual Conflict -3 Hours

This course is designed to develop a fuller understanding of the believer's authority in Jesus Christ, specifically in reference to the fight against the world, the flesh and the devil.

CL 211: The Practice of Prayer -1 Hour

The Practice of Prayer course will seek to build upon the Principles of Prayer as taught in your first year. In that course, you were introduced to the 10 basic lessons of prayer as taught by the Lord Jesus Christ in the Gospels. In this short course, we will work through what it means to prevail in prayer and various accompaniments to prayer. We need always recall, we learn to pray by actually praying, so let's continue to be steadfast in prayer (Colossians 4:2).

CL 322: Practical Christian Living – 2 Hours

Students will learn how to maintain spiritual and emotional health in the midst of a demanding ministry. Topics to be discussed include the importance of maintaining one's devotional life, personal discipline and time management, ministry and family life, and ongoing education and personal growth.

Course *Descriptions* CONT.

Practical Ministry Courses

PM 111: Evangelism & Discipleship -3 Hours

The biblical basis for evangelism and discipleship is presented in this course. An understanding of the gospel and the process of discipleship are emphasized with the goal of developing an evangelistic lifestyle.

PM 115: Apologetics – 3 Hours

This course will present the Christian faith in both defensive and offensive terms with the Bible as the basis. Apologetical methods will be surveyed, but emphasis will be given to the presuppositional method. We will answer common questions posed against the Christian faith and deal with relevant “hot topics” in the Christian community.

PE 101 & 201: Physical Education

Students participate in a daily sports program. Most of the time, this consists of the great EI tradition of volleyball. Character is revealed and honed under the pressure of competition while students learn teamwork, dealing with adversity and submission to authority.

PM 235: Biblical Counseling -3 Hours

This course is an introduction to lay biblical counseling grounded in the sufficiency and authority of God’s word and in the ongoing ministry of the Holy Spirit. A basic counseling methodology will be taught and applied to several common counseling situations.

PM 212: Methodology of Missions -3 Hours

Basic concepts of biblical missiology and the role of missions in the local church is presented in this course. An introduction to ministry in a different cultural setting is also studied. This course introduces the student to the issues involved in evangelism, discipleship and church planting across cultural boundaries.

PM 321: Ministry in the Local Church – 1 Hour

This class will aid students who want to explore practical dimensions of local church ministry including: The new life as the foundation of all ministry, local church ministry in the context of the Great Commission, ministry design and evaluation, the rhythms of ministry and rest as a key to longevity, and the role of spiritual elders and mentors.

Course *Descriptions* CONT.

PM 336: Counseling the Hard Cases – 1 Hour

This course builds on PM 235 and addresses biblical principles for addressing the more difficult counseling situations that can arise in ministry.

PM 323: Culture and Ethics – 3 Hours

In this course we will seek to understand how Christians should engage our culture that is increasingly post-Christian. This course will begin by examining how the Word of God is the foundation for all believers no matter the context. The Word of God possesses clear direction for how the Lord desires His people to live for His glory at this present time. Having come to a general understanding for how the Lord desires for His people to live, specific topics and issues will be explored in light of what the Word of God has to say about them.

PM 324: Leadership Development – 1 Hour

This class provides students with a biblical foundation for leadership. It teaches students to understand what biblical leadership is. The course focuses on leadership skills/principles observed in the lives of those mentioned in Scripture. It also helps students to begin developing leadership skills.

PM 312: Cross-centered Ministry – 1 Hour

This course focuses on Jesus' teachings in the gospels concerning the cost of following Him with a particular focus on the cost of following Jesus in ministry.

PM 313: Prayer & Ministry – 2 Hours

This course focuses on the ministry of intercessory prayer. Special attention is given to a theology of prayer, the content of prayer, the manner of prayer, and the practice of prayer.

MI 285: Ministry Practicum -2 Hours

Students select from a variety of ministry opportunities within the areas of children's ministries, feeding the homeless, music and drama. Although some formal training time is included, the majority of the Practicum time is spent in supervised ministry performance. Students must write a summary to process and evaluate the lessons they have learned.

WE ARE AFFORDABLE.

6

Retreats

2025/2026

Academic Policy

Accreditation

The Evangelical Institute (EI) is committed to providing high-quality education and theological training that promotes life change. It is important to note that while EI is committed to quality academic study, EI is not accredited by a recognized accrediting agency. Consequently, the Associate and Bachelor degrees offered by EI are not accredited degrees.

Legal Exemption: Under South Carolina Code 59-58-30(4), EI is exempted from accreditation requirements as an institution whose sole purpose is religious or theological training. This allows us to confer degrees in these fields while focusing on our mission to provide comprehensive and meaningful education that leads to life change.

EI remains dedicated to fostering life change through our academic program. We believe that our program encompasses personal and spiritual growth, and we are committed to supporting our students in these endeavors.



HIGHER EDUCATION UNIVERSITIES AND SEMINARIES OUR ALUMNI HAVE ATTENDED WITH AN EI UNDERGRAD DEGREE.



SANGRE de CRISTO SEMINARY



GREENVILLE
PRESBYTERIAN
THEOLOGICAL SEMINARY



Southeastern
Baptist Theological Seminary



REFORMED THEOLOGICAL
SEMINARY



2025/2026

Academic Policy

Credit Hour Policy

The Evangelical Institute complies with the definition of a credit hour articulated by the U.S. Department of Education (USDOE):

Credit hour: Except as provided in 34 CFR 668.8(k) and (l), a credit hour is an amount of work represented in intended learning outcomes and verified by evidence of student achievement that is an institutionally established equivalency that reasonably approximates not less than—

(1) One hour of classroom or direct faculty instruction and a minimum of two hours of out of class student work each week for approximately fifteen weeks for one semester or trimester hour of credit, or ten to twelve weeks for one quarter hour of credit, or the equivalent amount of work over a different amount of time; or

(2) At least an equivalent amount of work as required in paragraph (1) of this definition for other academic activities as established by the institution including laboratory work, internships, practical, studio work, and other academic work leading to the award of credit hours. (See [Federal Regulation 34 CFR 600.2](#))

A student’s GPA is calculated by dividing the grade points earned by the hours of classes taken.

GRADING SYSTEM		
Percent	Grade	Points/Hours
96-100	A	4.00
93-95	A-	3.50
89-92	B	3.00
85-88	B-	2.50
81-84	C	2.00
77-80	C-	1.50
74-76	D	1.00
70-73	D-	0.50
0-69	F	0



2025/2026

Academic *Policy*

Transfer Credit Policy

We work with individual students to determine which credits will transfer into our program. Please contact us if you have any questions regarding which credits we accept.

In order to earn a bachelor degree, students must earn and transfer a minimum of 24 general education credits into the program. General education credits must satisfy the following minimums:

- English: Minimum of 6 credit hours
- History: Minimum of 6 credit hours
- Math: Minimum of 3 credit hours
- Social Sciences: Minimum of 3 credit hours
- Electives: Minimum of 6 credit hours

CLEP Policy

The Evangelical Institute will grant credit to currently enrolled students for CLEP examinations passed with a score of 50 or higher (level II languages require a higher score). Credit awarded through CLEP may be used to satisfy EI's general education requirements. Students who have earned credit from a CLEP exam should not take a comparable college course since credit will not be granted for both.

When registering for a CLEP exam, use the following school code: 8869

Transcripts

You may inquire at any time about your academic progress in a course. Copies of all academic records are kept on file. Please note the following:

- Email transcripts are only available for students who have graduated in 2010 or later. If you graduated prior to 2010, please request a printed transcript.
- The Evangelical Institute reserves the right to withhold an official transcript from any student who has not met all financial obligations.

WE ARE NON-DENOMINATIONAL.

7



Resident Faculty

Colin Brazier

- B.S. Civil Engineering, Natal Technical College, Durban, South Africa
- Course work through Moore Theological College, Australia and Rosebank Bible College, South Africa
- Served with Operation Mobilization Missions (1990-2002)
- Teacher of Practical Ministry, OM Missionary Training School, Eastern Europe (1991-1996)
- OM Literature Warehouse, 2000-2002
- Teacher at the Evangelical Institute, 2002-Present
- Administrator of the Evangelical Institute, 2005-2009
- General Director of the Evangelical Institute, 2009-Present

Michael Garreau

- B.A. in Biblical Studies, Trinity College of the Bible
- M. Div., Sangre de Cristo Seminary
- Th.M., Erskine Theological Seminary
- Teacher at the Evangelical Institute, 2008-Present

Tim Harris

- B.S. in Civil Engineering, Clemson University
- M.A. in Bible Exposition, Columbia International University (2019)
- Teacher at the Evangelical Institute, 2014-Present

Art Nuernberg

- B.S. Chemistry, Furman University
- Teacher of the Evangelical Institute, 1974-Present
- Pastor, First Evangelical Church of Greenville, 1986-1999
- Executive Director of the Evangelical Institute, 2000-2009
- Pastoral Director of the Evangelical Institute, 2009-Present
- International Conference Speaker (Japan, Spain, and Nepal)
- Author: *Jesus on Prayer*

Ben Solensky

- Bachelor of Biblical Exposition and Church Ministry, Evangelical Institute
- M.Div., Greenville Presbyterian Theological Seminary
- Teacher at the Evangelical Institute, 2023-Present

Adjunct Faculty

Kevin Hurt

- M.A. Biblical Studies, Masters University
- D.Min. in Biblical Counseling, Masters University
- Founding Pastor, Grace Bible Church (1988-2020)
- Pastor of Discipleship, Ebenezer Baptist Church (2023-Present)
- Executive Vice President of I.A.B.C. (International Association of Biblical Counselors) (2012-2020)

Don Pucik

- B.A. of Arts and History, Blue Mountain College
- M.Div., New Orleans Baptist Theological Seminary
- D.Ed.Min, New Orleans Baptist Theological Seminary (course work completed)
- Mission Strategist, Northshore Baptist (2019 – Present)
- Senior Pastor, Wynne Baptist Church (2013-2019)
- Associate Executive Director, Arkansas Baptist State Convention (2003-2013)



PURPOSE & MISSION

The Evangelical Institute exists to train young believers to develop a relationship with Jesus Christ that expresses itself in godly character and missional living.

